



# **Documentation**

## **of version 0.1**



Copyright (c) Creative Commons Attribution-Non-Commercial-Share Alike 3.0  
info@bimserver.org

## CHANGELOG

<b>Date</b>	<b>Description</b>	<b>Author</b>
'2009-01-27	First start	Léon van Berlo
'2009-02-17	Added changes for RC2	Léon van Berlo
'2009-03-05	Added changes for stable release	Léon van Berlo

# TABLE OF CONTENTS

<b>1 Introduction</b> .....	<b>7</b>
1.1 First.....	7
<b>2 Installation</b> .....	<b>9</b>
2.1 Quick start standalone version.....	9
2.1.1 Requirements.....	9
2.1.2 Start.....	9
2.1.3 Testing the installation.....	9
2.2 WAR file.....	9
2.2.1 Requirements.....	9
2.2.2 Start.....	10
2.2.3 Testing the installation.....	10
2.3 Installation-issues .....	10
<b>3 Architecture</b> .....	<b>11</b>
<b>4 First use</b> .....	<b>15</b>
4.1 Using the webinterface.....	15
<b>5 Advanced use</b> .....	<b>17</b>
5.1 Using the client.....	17
5.1.1 SOAP interface.....	17
5.2 Using the differenceFinder.....	17
5.3 Configuring the server.....	17
5.4 REST-isch links.....	17
<b>6 What doesn't work</b> .....	<b>19</b>

# 1 INTRODUCTION

*This is the introduction.*

## 1.1 FIRST

Blabla

## 2 INSTALLATION

There are two possibilities to install the bimserver: stand alone (with a build in Jetty server) or deploy the WAR file (for example on a tomcat server).

This chapter will describe both options.

### 2.1 QUICK START STANDALONE VERSION

#### 2.1.1 REQUIREMENTS

Download and install **Java version 6** on <http://java.com/download/>

Download the latest **JAR file** on <http://download.bimserver.org/0.1/>

#### **Optional:**

Download the client on <http://download.bimserver.org/0.1/>

Download the free IFCviewer on <http://www.ifcbrowser.com>

#### 2.1.2 START

Open the JAR file in a Java virtual machine (double click).

At some point in this process, you might be warned with a firewall message. Of course you should choose 'do not block'.

You get a small window called 'BIM Server Starter'. Choose your options (if you don't know what to do, don't change them) and click start.

The server will start and during this you will see some messages. There will be a directory deployed including a BerkeleyDatabase. At the end you will see 'org.bimserver.Server - Server started succesfully'. You are now running your own bimserver!

#### 2.1.3 TESTING THE INSTALLATION

Open your favorite webbrowser (firefox) and browse to <http://localhost:8081> (or another port when you choose another one in the starter window). You will get the ugly opening page of the bimserver. Congratulations: you are ready to start using the bimserver!

Click on login (yes, it's hard to find) and login using admin/admin as the username/password.

## 2.2 WAR FILE

### 2.2.1 REQUIREMENTS

Download and install **Java version 6** (update 11) on <http://java.com/download/>

Download and install **Tomcat versie 6** (6.0.18) on <http://tomcat.apache.org/download-60.cgi>

Download the latest WAR file on file <http://download.bimserver.org/0.1/>

## Installation

### Optional:

Download the client on <http://download.bimserver.org/0.1/>

Download the free IFCviewer on <http://www.ifcbrowser.com>

### 2.2.2 START

Deploy the WAR file in tomcat (if you don't know howto, read the tomcat instructions).

The starting of the bimserver takes about 20 seconds. There will be a directory deployed including a BerkeleyDatabase.

### 2.2.3 TESTING THE INSTALLATION

Open your favorite webbrowser and go to <http://localhost:8080/bimserver-0.1>

Attention: when you run tomcat on a different port you should go to the other port. When you deploy a different filename (like *bimserver-x.xxx*) you should also use a different URL depending on the filename you deployed.

You will get the ugly opening page of the bimserver. Congratulations: your PC is now a bimserver!

Click on login (yes, it's hard to find) and login using admin/admin as the username/password.

## 2.3 INSTALLATION-ISSUES

**My standalone server won't start (testing the installation doesn't give results). What's wrong?**

When you are using windows (try ubuntu and) make sure the firewall isn't blocking the bimserver.

**I get some strange errors when I try the new version. How about that?**

You should delete the database of the old version, before deploying (starting) the new one.

### 3 ARCHITECTURE

*This chapter will describe the global architecture..*

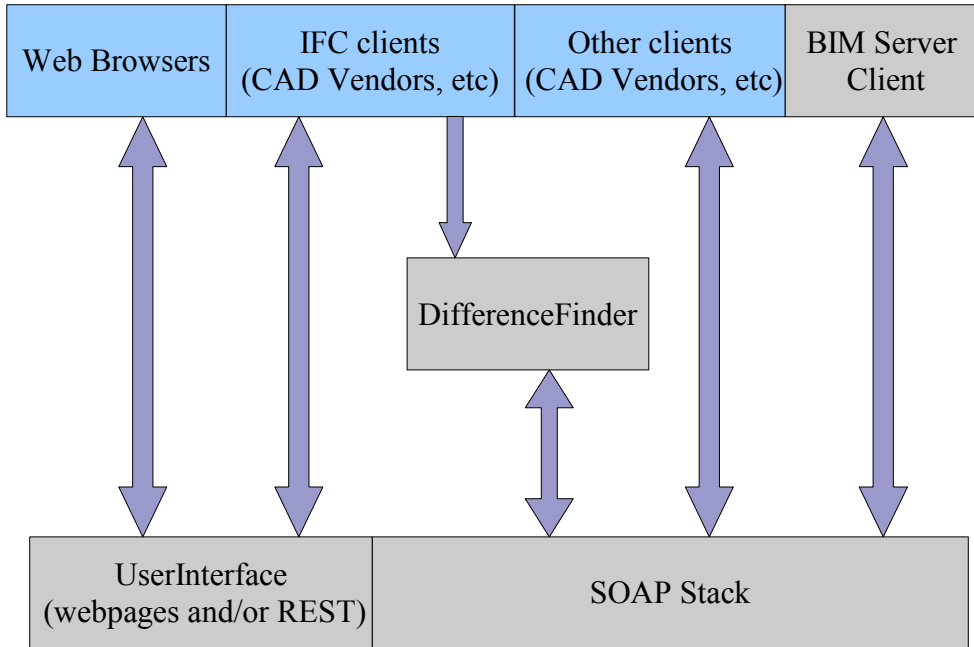
The global architecture looks something like this:

Clients (see below)		
UserInterface (web, ifc, rest-ish)		SOAP Stack
Interface (ServiceInterface)		
Service Layer		
Interface (BimServerStore)		
Column Oriented Database		Other Database Types
Interface (ColumnDatabase)		
BerkeleyDB	Other CODB's (Hbase, SimpleDB, BigTable)	Other Database (IFC-File Based, OODB)

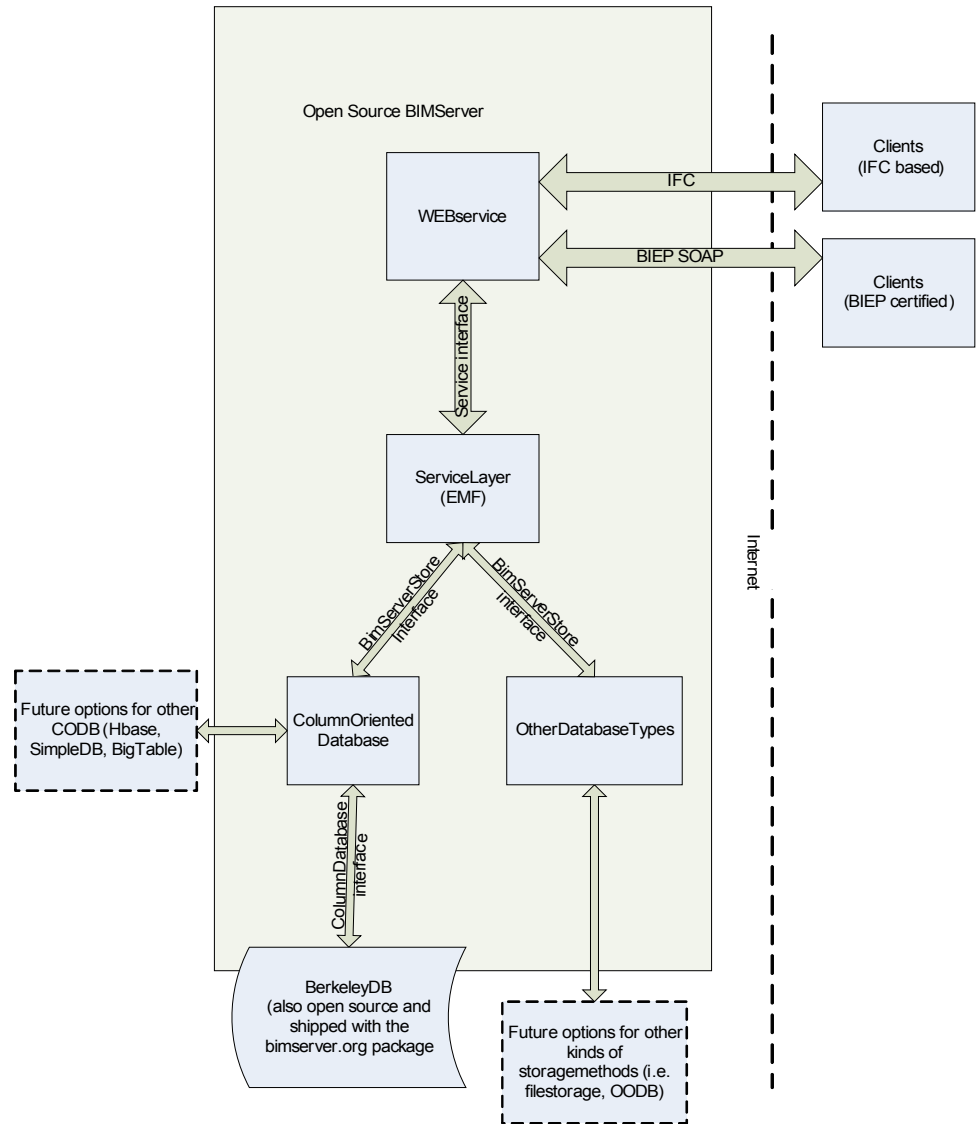
Has yet to be made	Clients
Part of BIMServer.org	Programmatic Interfaces

## Architecture

There are some different clients to interface with the bimservers:



A different view on the architecture (but basically the same):



## 4 FIRST USE

*This chapter will guide you in using the bimserver for the first time.*

### 4.1 USING THE WEBINTERFACE

Browse (using your favorite webbrowser) to <http://localhost:8081/bimserver/> or <http://localhost:8080/bimserver-0.1>

Click on 'login' (hard to find, we know).

Login using admin/admin as the username/password.

## 5 ADVANCED USE

*Extra stuff for advanced users.*

### 5.1 USING THE CLIENT

tbc

#### 5.1.1 SOAP INTERFACE

Bimserver.org is the reference implementation of the *ilding Information Exchange Protocol* (BIEP) of the 'open source BIM foundation' (osbim.org).

### 5.2 USING THE DIFFERENCEFINDER

tbc

### 5.3 CONFIGURATING THE SERVER

tbc

### 5.4 REST-ISCH LINKS

tbc

### 5.5

## 6 WHAT DOESN'T WORK

The stuff that doesn't work is listed on the bugtracker at sourceforge:

[http://sourceforge.net/tracker/?group\\_id=224353&atid=1061305](http://sourceforge.net/tracker/?group_id=224353&atid=1061305)

Other (global) issues we know of:

- **Multuser**

Using the bimserver with several people at the same time can result in 'unpredictable behavior'

- **Logging**

Can be much better.

- **Exceptions**

It happens often that nothing happens after an exception (without userfeedback) resulting in the server to 'hang'.

- **Memorymanagement**

The use of memory of the server has to be optimized. It's possible that the memory reaches it's limitations due to caching.